

THE ANCHORAGE

SIR JOHN ROGERSONS QUAY | DUBLIN 2



TO LET
PRIME
WATERFRONT
GRADE A
OFFICES
1ST & 2ND
FLOORS

10,766 SQ FT
(1,000 SQ M)

HWBC 

THE ANCHORAGE

SIR JOHN ROGERSONS QUAY | DUBLIN 2



LOCATION

The Anchorage enjoys a prime waterfront location in the south docklands among some of the most impressive office buildings in Dublin 2.

The building is located in the heart of the financial, legal and business district of the south docklands with extensive riverfront views overlooking the IFSC, north docks and Convention Centre. The area has a host of tenant amenities including cafés, bar and restaurants within a short walk and extensive public transport links.

DESCRIPTION

The Anchorage is a high-profile Grade A building with very high specification finishes throughout. The office is well served by public transport with both the DART and LUAS within walking distance.

The First and Second floors are now available to let on new lease terms and will be presented to the highest specification including raised access floors, metal tile suspended ceilings and new VRF air conditioning.



View from office floors



TO LET PRIME WATERFRONT GRADE A OFFICES 1ST & 2ND FLOORS 10,766 SQ FT (1,000 SQ M)

SPECIFICATION



Suspended metal
tile ceilings



Raised access
floors



New VRF
air conditioning



Energy efficient lighting
with occupancy
controls to office
and WC cores



Building Management
System (BMS)
with floor by floor
metering



High quality
reception lobby
and security
access systems



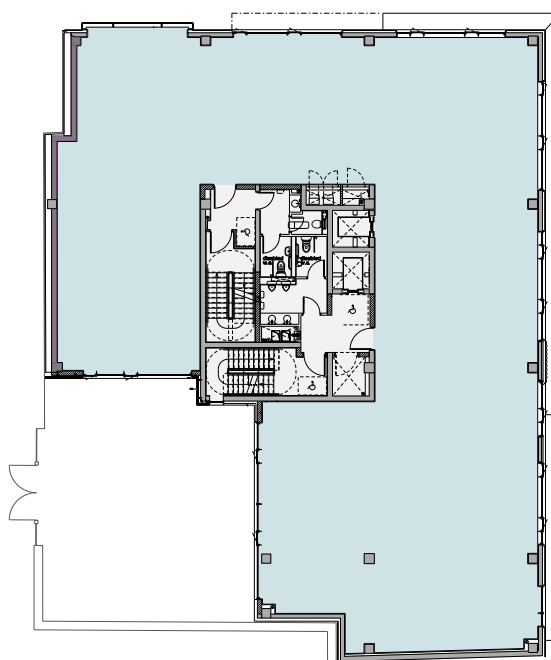
Bright efficient floor
plates with stunning
waterfront view



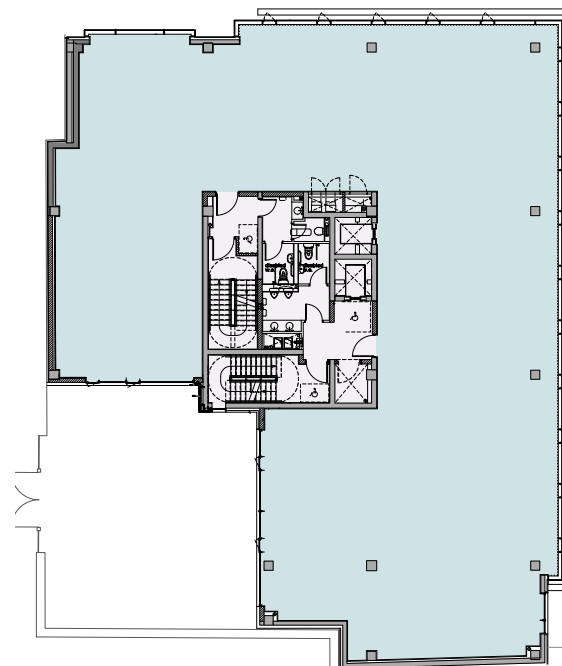
2 no. 8 person
lifts serving all
levels



Access control,
intruder alarm
and CCTV system



FIRST FLOOR



SECOND FLOOR

ACCOMMODATION

The Anchorage	Sq Ft (NIA)
First floor	5,212
Second floor	5,554
Total NIA	10,766
Car Parking	4 spaces





BER RATING



LEASE TERMS

Rent on application.
New lease available.



FURTHER INFORMATION

For further information on The Anchorage, please contact HWBC

Paul Scannell

M: + 353 87 226 0473

E: pscannell@hwbc.ie

Emma Murphy

M: + 353 87 785 5423

E: emurphy@hwbc.ie

HWBC



80 Harcourt Street, Dublin 2

LRN: 002098

Messrs. HWBC Limited t/a HWBC and for the vendors or lessors of this property whose Agents they are, give notice that: (i) The particulars are set out as a general outline for the guidance of intending purchasers or lessees, and do not constitute part of an offer or contract. (ii) All description, dimensions, references to condition and necessary permission for use and occupation, and other details are given in good faith and are believed to be correct, but any intending purchasers or tenants should not rely on them as statements or representations of fact but must satisfy themselves by inspection or otherwise as to the correctness of each of them, (iii) No person in the employment of HWBC Limited t/a HWBC has any authority to make or give any representative or warranty whatever in relation to this property. Designed and produced by Creativeworld Tel: +353 1 447 0553.