

Office & Business Space Listing

CONTENTS

Office Properties – For Sale/To Let

Dublin City Centre	1
Dublin Suburbs	5
Provincial	8

Industrial Properties – For Sale/To Let

Unit 13 & 14, East Coast Business Park, Drogheda	10
Building 1, Snugborough Industrial Estate, Ballycoolin, Dublin 15	10
Former Siemens Unit, Ballymoss Road,	11
Units 1-4, 77 Furze Road, Sandyford, Dublin 18	11

DUBLIN CITY CENTRE



The Sharp Building, Hogan Place, Dublin 2

Size/Lease 4,157 sq m (44,745 sq ft)

Rent/Sale Rent on Application

Parking 41 Spaces

Status Available Q4 2017

Contact **Paul Scannell** (pscannell@hwbc.ie)
Emma Murphy (emurphy@hwbc.ie)



One Haddington Buildings, Haddington Road, Dublin 4

Size/Lease 4,227 sq m (45,500 sq ft)

Rent/Sale Rent on Application

Parking Parking Available

Status Due to undergo refurbishment works

Contact **Paul Scannell** (pscannell@hwbc.ie)
Emma Murphy (emurphy@hwbc.ie)



Three Haddington Buildings, Percy Place, Dublin 4

Size/Lease	1,860 sq m (20,021 sq ft)
Rent/Sale	Rent on Application
Parking	14 Spaces
Status	Undergoing Refurbishment Available Q2/3 2018
Contact	Paul Scannell (pscannell@hwbc.ie) Emma Murphy (emurphy@hwbc.ie)



LET

Ground Floor St. Stephen's Green House, Earlsfort Terrace, Dublin 2

Size/Lease	448 sq m (4,816 sq ft)
Rent/Sale	Rent on Application
Parking	10 Spaces
Status	LET TO BLM LAW
Contact	Emma Murphy (emurphy@hwbc.ie) Paul Scannell (pscannell@hwbc.ie)



ALL ENQUIRIES

East Point Business Park, Dublin 3

Size/Lease	Various sq m (Various sq ft)
Rent/Sale	Rent on Application
Parking	N/A
Status	ALL ENQUIRIES
Contact	Emma Murphy (emurphy@hwbc.ie) Paul Scannell (pscannell@hwbc.ie)



LET

Part Ground Floor, Block P4B, East Point Business Park, Dublin 3

Size/Lease	520 sq m (5,600 sq ft) GIA
Rent/Sale	Rent on Application
Parking	8 spaces available
Status	LET TO SPANISH POINT TECHNOLOGIES
Contact	Emma Murphy (emurphy@hwbc.ie)



LET

**Part 3rd Floor, Europa House, Harcourt Centre,
Harcourt Road, Dublin 3**

Size/Lease 281 sq m (3,025 sq ft)

Rent/Sale Rent on Application

Parking Parking Available

Status LET TO IVANTI

Contact **Emma Murphy** (emurphy@hwbc.ie)
Paul Scannell (pscannell@hwbc.ie)



LET

**Two Haddington Buildings, Haddington Road,
Dublin 4**

Size/Lease 2,739 sq m (29,482 sq ft)

Rent/Sale In excess of €5.5M.

Parking Parking Available

Status Available Now

Contact **Emma Murphy** (emurphy@hwbc.ie)
Paul Scannell (pscannell@hwbc.ie)



91 Harcourt Street, Dublin 2

Size/Lease 94 sq m (1,103 sq ft)

Rent/Sale Guide Price €565,000

Parking 1 Space Available

Status Available Now

Contact **Jenny Prunty** (jprunty@hwbc.ie)
Emma Murphy (emurphy@hwbc.ie)



LET

2-4 Claremont Road, Sandymount, Dublin 4

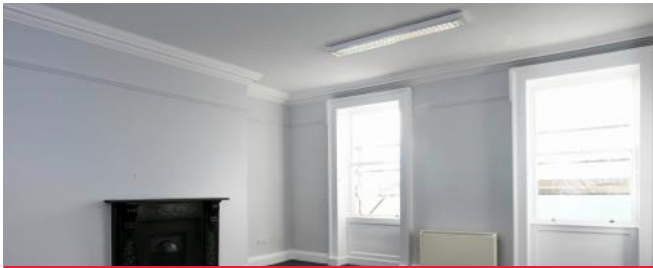
Size/Lease 1,920 sq m (20,000 sq ft)

Rent/Sale Rent on Application

Parking 21 Spaces

Status LET TO BOULDER MEDIA

Contact **Emma Murphy** (emurphy@hwbc.ie)
Conor Kevany (ckevany@hwbc.ie)



LET

2nd Floor, 28 Merrion Square, Dublin 2

Size/Lease	106 sq m (1,141 sq ft)
Rent/Sale	Rent on Application
Parking	2 spaces available
Status	LET TO VROOM DIGITAL
Contact	Emma Murphy (emurphy@hwbc.ie)



LET

1st Floor, 8 Claremont Road, Sandymount, Dublin 4

Size/Lease	212 sq m (2,278 sq ft)
Rent/Sale	Rent on Application
Parking	8 Spaces
Status	LET
Contact	Emma Murphy (emurphy@hwbc.ie) Conor Kevany (ckevany@hwbc.ie)

DUBLIN SUBURBS



The Taney Buildings, Eglington Terrace, Upper Kilmacud Road, Dublin 14

Size/Lease 626 sq m (6,738 sq ft)

Rent/Sale Price on Application

Parking 7 Spaces

Status Available in 1 or 3 lots

Contact **Emma Murphy** (emurphy@hwbc.ie)
Conor Kevany (ckevany@hwbc.ie)



Ballymoss House, Ballymoss Road, Sandyford, Dublin 18

Size/Lease 5,245 sq m (56,460 sq ft) GIA

Rent/Sale Rent on Application

Parking Available

Status Undergoing refurbishment
PC Q3 2018

Contact **Paul Scannell** (pscannell@hwbc.ie)
Emma Murphy (emurphy@hwbc.ie)



Ballymoss House, Ballymoss Road, Sandyford, Dublin 18

Size/Lease 3,525 sq m (38,000 sq ft) GIA

Rent/Sale Rent on Application

Parking Available

Status Undergoing refurbishment
PC Q3 2018

Contact **Paul Scannell** (pscannell@hwbc.ie)
Emma Murphy (emurphy@hwbc.ie)



Second Floor, Cairn House, South County Business Park, Leopardstown, Dublin 18

Size/Lease 706 sq m (7,602 sq ft)

Rent/Sale To Let

Parking 10 Spaces Available

Status Available Now

Contact **Emma Murphy** (emurphy@hwbc.ie)
Paul Scannell (pscannell@hwbc.ie)



**Apex Business Centre (Units B, C & D),
Sandyford, Dublin 18**

Size/Lease 711 sq m (7,650 sq ft)

Rent/Sale For Sale by Private Treaty

Parking 15 Spaces Available

Status Available Now

Contact **Jenny Prunty** (jprunty@hwbc.ie)
Emma Murphy (emurphy@hwbc.ie)



LET

**Pelham House, South County Business Park,
Leopardstown, Dublin 18**

Size/Lease 2,470 sq m (26,587 sq ft)

Rent/Sale Rent on Application

Parking 44 Spaces

Status LET TO ARDAGH GROUP PLC

Contact **Emma Murphy** (emurphy@hwbc.ie)
Paul Scannell (pscannell@hwbc.ie)



77 Furze Road, Sandyford, Dublin 18

Size/Lease 2,050 sq m (22,000 sq ft)

Rent/Sale Rent on Application

Parking Available

Status Available Now

Contact **Paul Scannell** (pscannell@hwbc.ie)
Emma Murphy (emurphy@hwbc.ie)



77 Furze Road, Sandyford, Dublin 18

Size/Lease 1,200 sq m (12,900 sq ft)

Rent/Sale Price on Application

Parking Available

Status Available Now

Contact **Paul Scannell** (pscannell@hwbc.ie)
Emma Murphy (emurphy@hwbc.ie)



77 Furze Road, Sandyford, Dublin 18

Size/Lease	1,000 sq m (10,500 sq ft)
Rent/Sale	Rent on Application
Parking	Available
Status	Available Now
Contact	Paul Scannell (pscannell@hwbc.ie) Emma Murphy (emurphy@hwbc.ie)



1st Floor 52 Broom, 52 Broomhill Road, Tallaght, Dublin 24

Size/Lease	1,386 sq m (14,927 sq ft) GIA
Rent/Sale	Rent on Application
Parking	Available
Status	New Lease Terms Available
Contact	Emma Murphy (emurphy@hwbc.ie) Paul Scannell (pscannell@hwbc.ie)



Part Ground Floor 52 Broom, 52 Broomhill Road, Tallaght, Dublin 24

Size/Lease	634 sq m (6,831 sq ft)
Rent/Sale	Rent on Application
Parking	Available
Status	New Lease Terms Available
Contact	Emma Murphy (emurphy@hwbc.ie) Paul Scannell (pscannell@hwbc.ie)



LET

Ground Floor, Block C Ashtown Gate, Navan Road, Dublin 15

Size/Lease	390 sq m
Rent/Sale	€161.50/sq m
Parking	13 Spaces @ €850 p.c.s p.a.
Status	LET TO OPW
Contact	Emma Murphy (emurphy@hwbc.ie) Paul Scannell (pscannell@hwbc.ie)

PROVINCIAL



LET

**Unit 1C (1st Floor), The Atrium Building,
Blackpool Retail Park, Co. Cork**

Size/Lease	356 sq m (3,830 sq ft)
Rent/Sale	Rent on Application
Parking	Available
Status	RESERVED
Contact	Emma Murphy (emurphy@hwbc.ie)



**Unit 2G (2nd Floor), The Atrium Building,
Blackpool Retail Park, Co. Cork**

Size/Lease	190 sq m (2,047 sq ft)
Rent/Sale	Rent on Application
Parking	Available
Status	Available
Contact	Emma Murphy (emurphy@hwbc.ie)



**Unit 4F/G (4th Floor), The Atrium Building,
Blackpool Retail Park, Co. Cork**

Size/Lease	289 sq m (3,110 sq ft)
Rent/Sale	Rent on Application
Parking	Available
Status	Available
Contact	Emma Murphy (emurphy@hwbc.ie)



LET

**1st, 2nd & 3rd Floors, Park House, Blackpool Retail
Park, Co. Cork**

Size/Lease	1,484 sq m (15,941 sq ft) 1 st Floor: 498 sq m (5,360 sq ft) 2 nd Floor: 507 sq m (5,457 sq ft) 3 rd Floor: 477 sq m (5,134 sq ft)
Rent/Sale	Rent on Application
Parking	Available
Status	LET TO TEAMWORK
Contact	Emma Murphy (emurphy@hwbc.ie)

**Block G13, Cork Airport Business Park, Co. Cork**

Size/Lease 1,072 sq m

Rent/Sale Guide Price €1.550,000

Parking 45 Spaces Available

Status Available Now

Contact **Jenny Prunty** (jprunty@hwbc.ie)
Emma Murphy (emurphy@hwbc.ie)

INDUSTRIAL PROPERTIES



SOLD

**Units 13 & 14, East Coast Business Park,
Drogheda, Co. Louth**

Size/Lease	2,247 sq m
Rent/Sale	Guide Price €1.45m
Parking	N/A
Status	SOLD
Contact	Jenny Prunty (jprunty@hwbc.ie) Michael Gunne (m.gunne@reagunneproperty.ie)



LET

**Building 1, Snugborough Industrial Estate,
Ballycoolin, Dublin 15**

Size/Lease	4,058 sq m
Rent/Sale	€5.00/sq ft p.a.
Parking	75 Spaces
Status	LET
Contact	Paul Scannell (pscannell@hwbc.ie) Patrick Champion (pcampion@hwbc.ie)



**Former Siemens Unit, Ballymoss Road,
Sandyford, Dublin 18**

Size/Lease 1,003 sq m

Rent/Sale Rent on Application

Parking 37 Spaces

Status Available to Let (Short-Term)

Contact **Emma Murphy** (emurphy@hwbc.ie)



Units 1-4, 77 Furze Road, Sandyford, Dublin 18

Size/Lease Unit 1: 9,327 sq ft
Unit 2: 4,284 sq ft
Unit 3: 4,170 sq ft
Unit 4: 4,332 sq ft

Rent/Sale Rent on Application

Parking Available

Status Available

Contact **Paul Scannell** (pscannell@hwbc.ie)

CONTACT OUR OFFICE AND BUSINESS SPACE TEAM



Paul Scannell
Director
T +353 1 77 50 527
E pscannell@hwbc.ie



Emma Murphy
Divisional Director
T +353 1 77 50 519
E emurphy@hwbc.ie



Conor Kevany
Director
T +353 1 77 50 527
E ckevany@hwbc.ie